

24/01317/FUL
**Land Opposite Lockhams Hill, Lockhams Road,
Curdridge, Hampshire**

Erection of 3 detached 4 bedroom dwellings with private amenity space,
off-road parking, soft landscaping and associated works

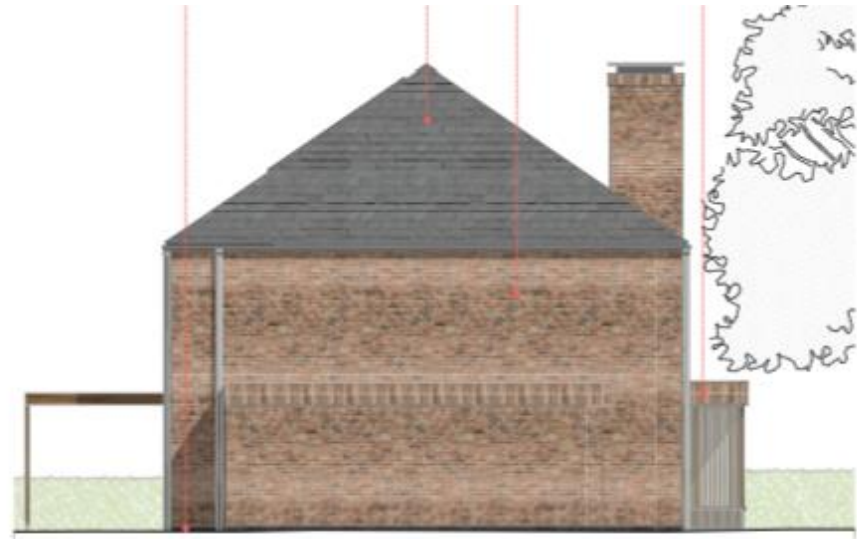
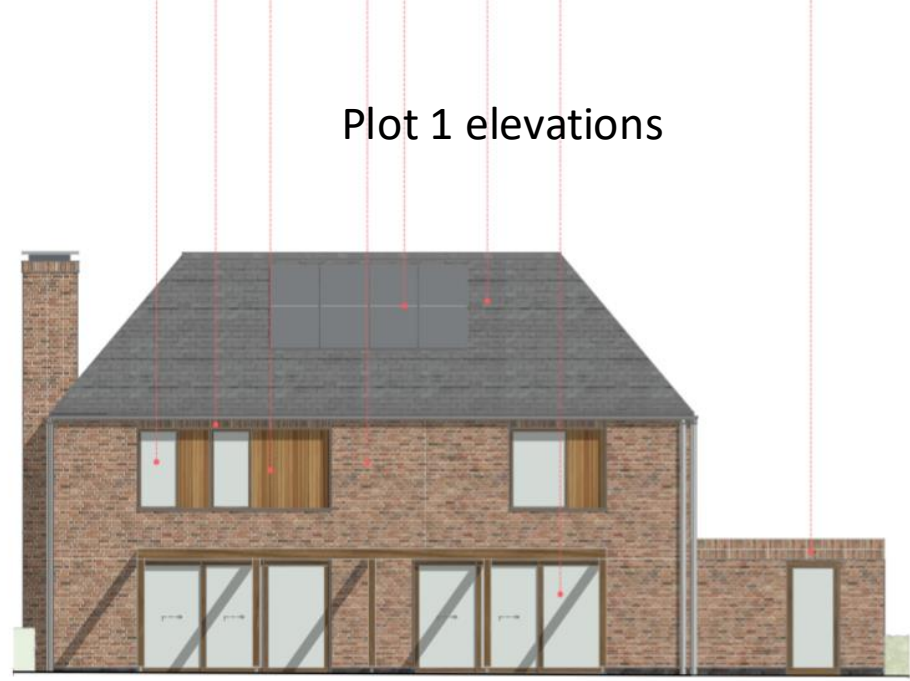




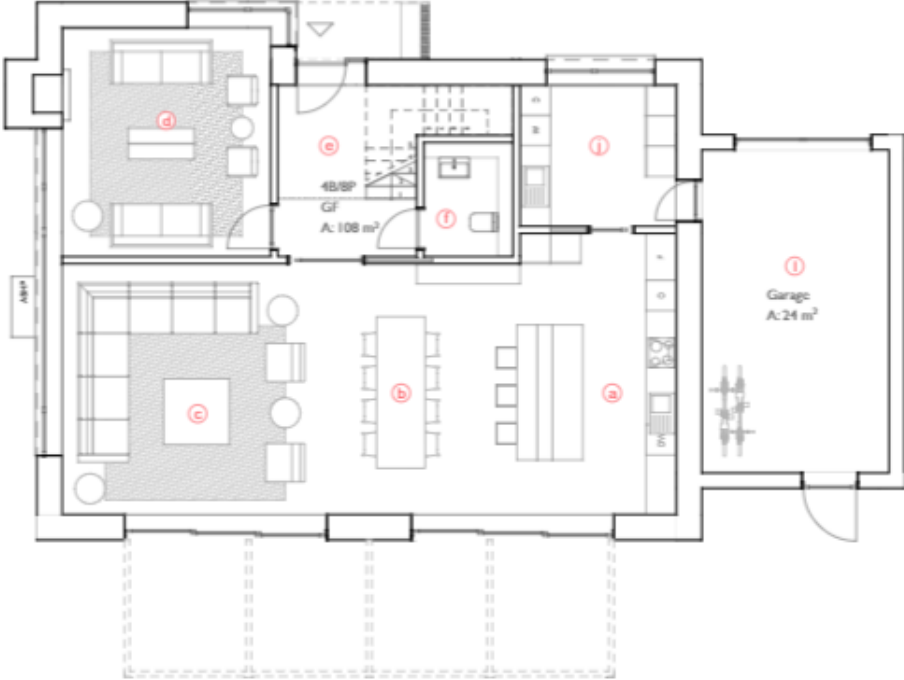




Plot 1 elevations



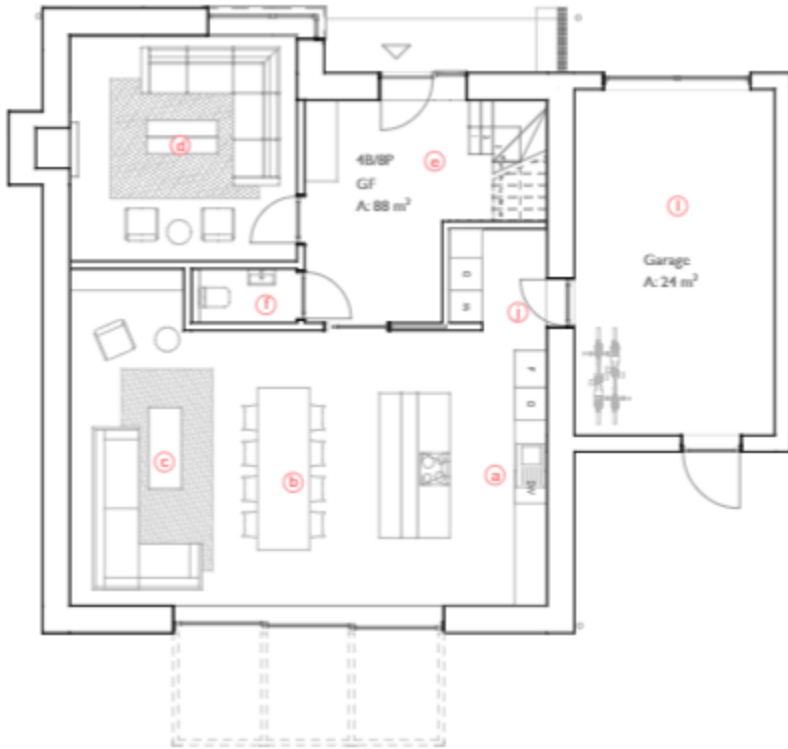
Plot 1 floor plans



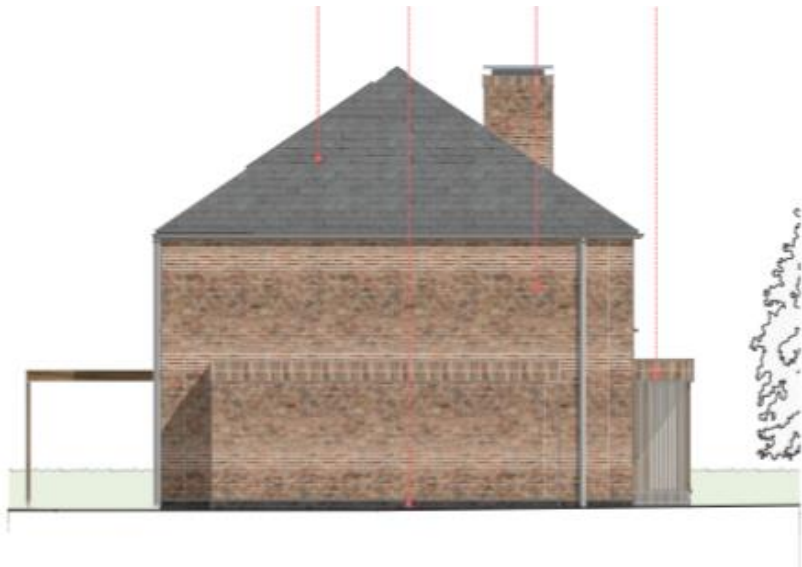
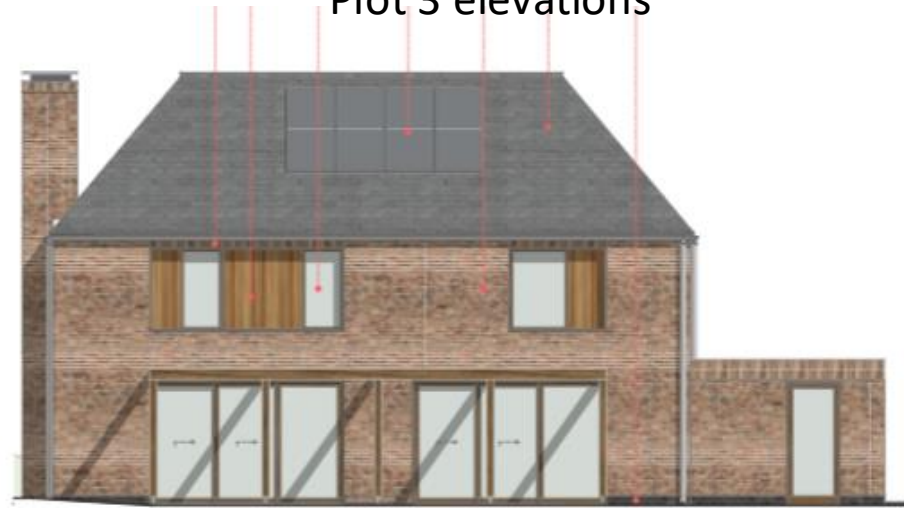
Plot 2 elevations



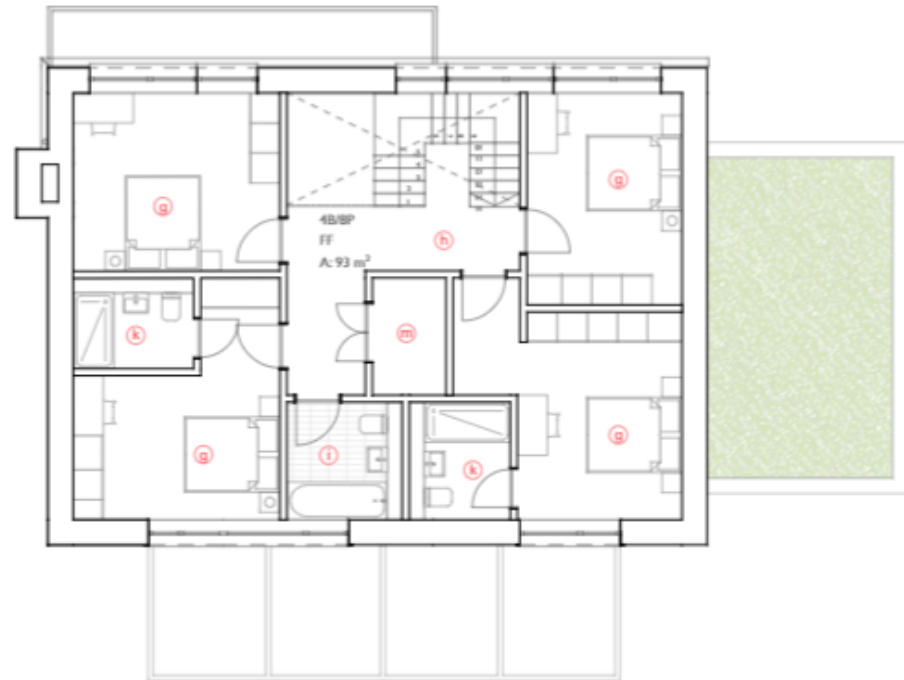
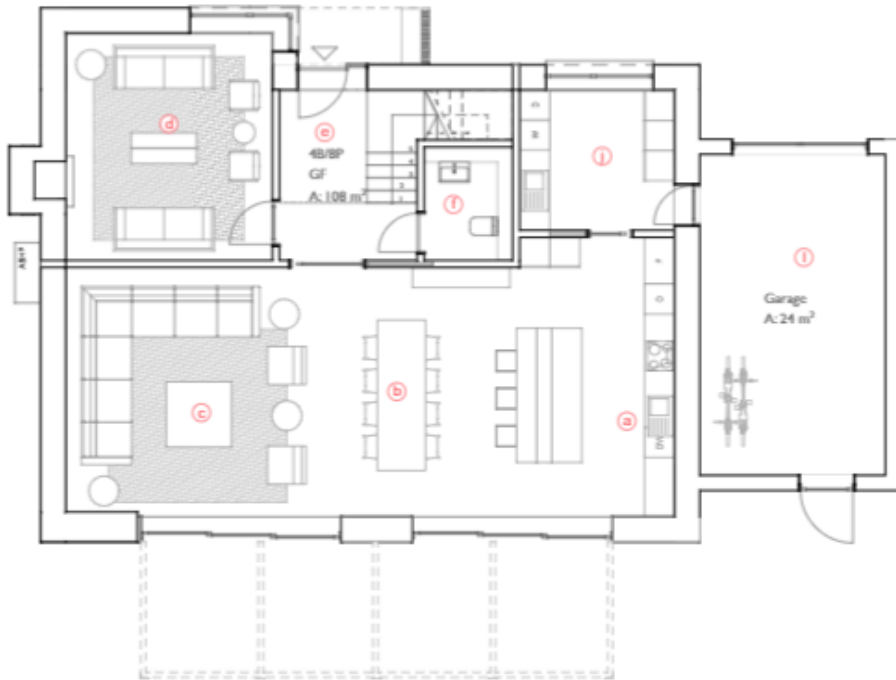
Plot 2 floor plans



Plot 3 elevations



Plot 3 floor plans





View from the corner of
Lockhams road and Gordon Road



View towards north western
corner of the site



View of TPO tree



View toward neighbour to the south



View from Lockhams Road



View across the site toward the NW



View toward the NW



View along the southern
boundary looking west



Looking east along Lockhams Road
Junction with Gordon Road



Looking west along Lockhams Road at
Junction with Gordon Road

RECOMMENDATION - REFUSE

Proposal fails comply with Local Plan policies
as is laid out within the report.